

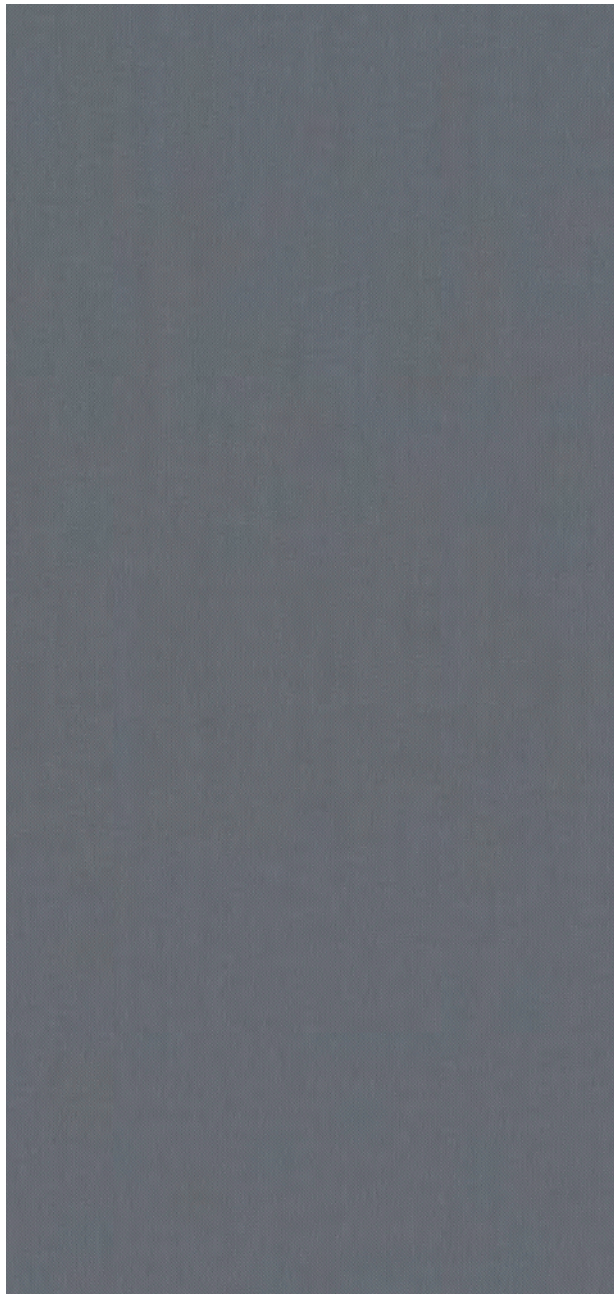


**Tecno**

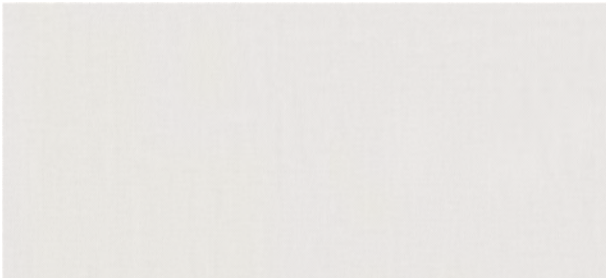


Openness | 3%

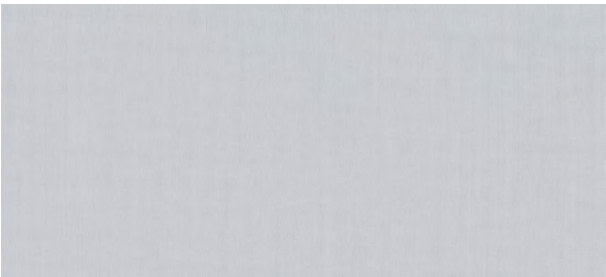
PVC FREE



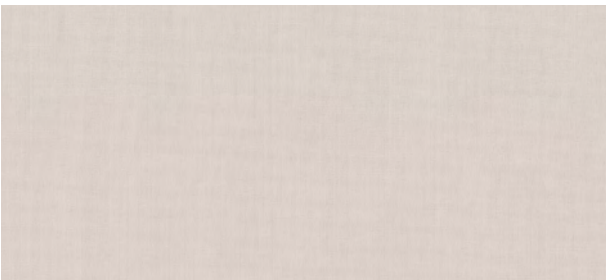
Platinum



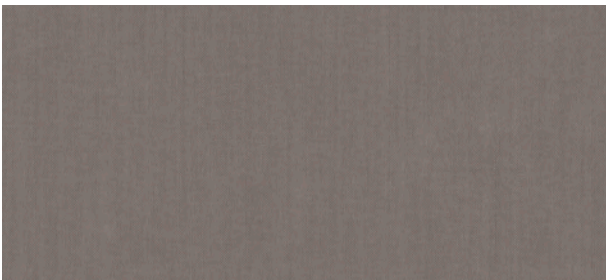
Champagne



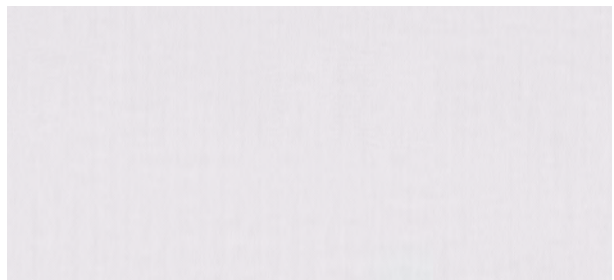
Silver



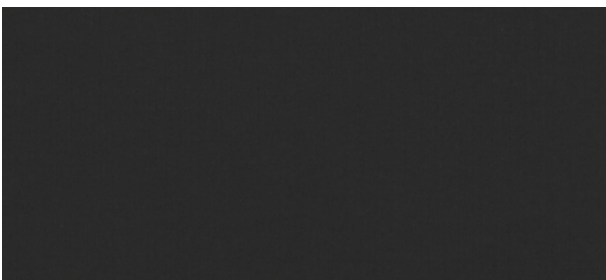
Blush



Earth



Snow



Night





**COMPOSITION**  
100% Polyester (Trevira CS)



**WEAVE STYLE**  
Plain Weave



**WIDTH**  
118" (300 cm)



**FABRIC WEIGHT**  
250 g/m<sup>2</sup> (8.82 oz/sqyd)



**FABRIC THICKNESS**  
0.49 mm (0.019") ± 5%



**UV BLOCKAGE**  
97%



**GREEN STANDARDS**  
Oeko-Tex Standard 100  
PVC - Free  
Trevira CS



**FIRE CLASSIFICATION**  
NFPA 701, B1, M1, C1, B-s1,d0



**CERTIFICATIONS**  




**ACOUSTIC RATING**  
NRC 0.45

Tecno | 3% Openness

Colour	Rs	As	Ts	Tv	IR Reflection	SHGC
Platinum	39%	35%	26%	10%	53%	0.35
Snow	57%	0%	43%	43%	54%	0.43
Champagne	60%	1%	39%	41%	55%	0.39
Silver	53%	13%	34%	30%	54%	0.37
Blush	55%	11%	34%	32%	55%	0.37
Earth	42%	32%	26%	12%	51%	0.34
Night	28%	54%	39%	41%	54%	0.33

As (Solar Absorption) + Rs (Solar Reflection) + Ts (Solar Transmission) = 100% of solar energy. Tv = Visible Light Transmission.

Optical properties (Rs, As, Ts, Tv) are measured according to standards EN 410, 14500/14501.

Glass performance tests for Solar Heat Gain Coefficient (SHGC) were conducted in accordance with EN 410 and EN 14500 using glazing type E (reflective triple glazing type E: g=0.55, Ug=0.8

Wavelengths between 790 and 2500nm were used for calculating the medium of IR Reflection%.

All performance values are measured within tolerances of ±5%.

Contact ELITE PRO for larger fabric swatches

© 2021, ELITE PRO, A division of Elite Vertical Blinds Mfg. Co. Ltd.