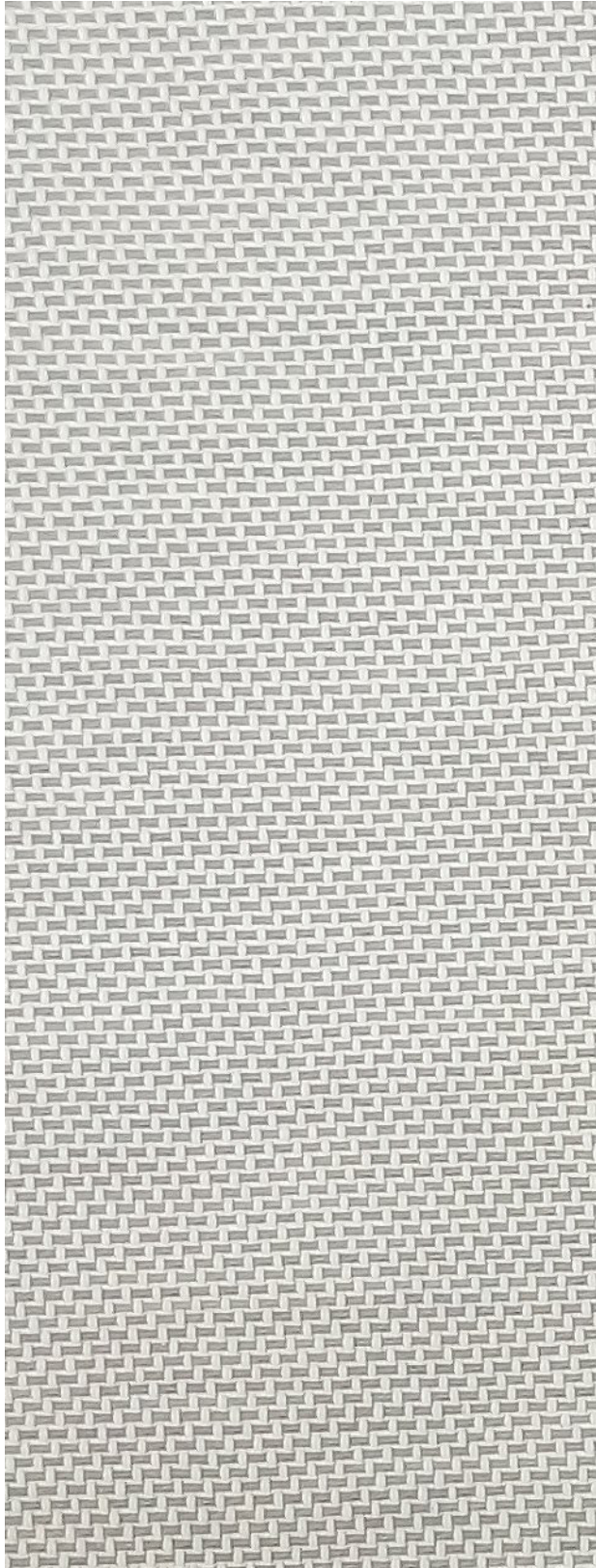


PROWEAVE™ - W

Openness | 0%



Platinum

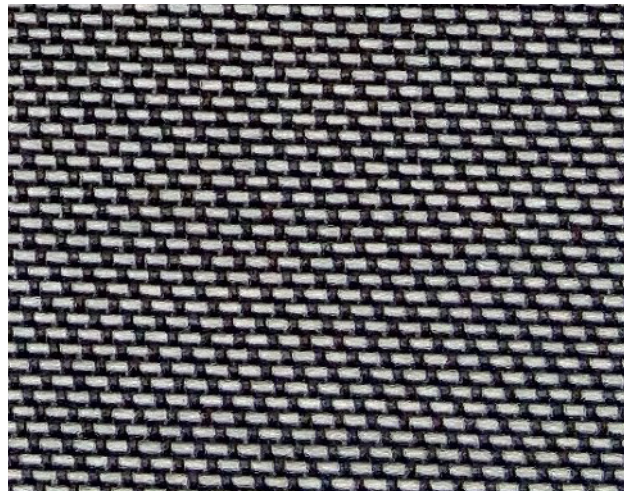
Shown in Openness 0%



White



Alabaster



Husky Grey

PROWEAVE™ - W

Specifications



COMPOSITION

22% Polyester, 78% Vinyl



WEAVE STYLE

Satin Weave 2-Sided Fabric



WIDTH

72" (180 cm)
98" (250 cm)



FABRIC WEIGHT

0% 416 g/m² (12.27 oz/sqyd)



FABRIC THICKNESS

0% 0.61 mm (0.024") ± 5%



UV BLOCKAGE

0% 99%



GREEN STANDARDS

GreenGuard Gold
Fungal Resistance ASTM G21



FIRE CLASSIFICATION

NFPA 701 2004 M1



FIRE CLASSIFICATION



ProWeave™ - W | 0% Openness

Colour	Rs	As	Ts	Tv	SHGC
White	63%	14%	23%	18%	0.29
Alabaster	61%	19%	20%	15%	0.29
Platinum	33%	55%	12%	9%	0.24
Husky Grey	54%	32%	14%	9%	0.42



As (Solar Absorption) + Rs (Solar Reflection) + Ts (Solar Transmission) = 100% of solar energy. Tv = Visible Light Transmission. SHGC = Solar Heat Gain Coefficient is measured using 1/4" heat absorbing glass + fabric. All performance values are measured within tolerances of ±5%.

Contact ELITE PRO for larger fabric swatches.

© 2018, ELITE PRO, A division of Elite Vertical Blinds Mfg. Co. Ltd.

