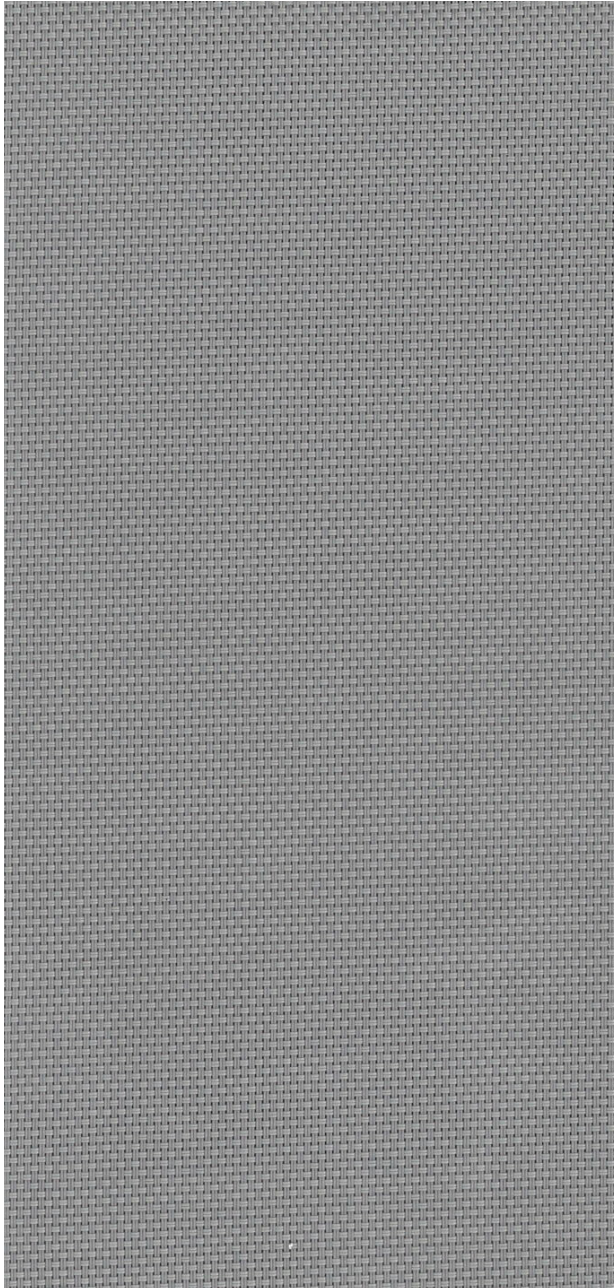


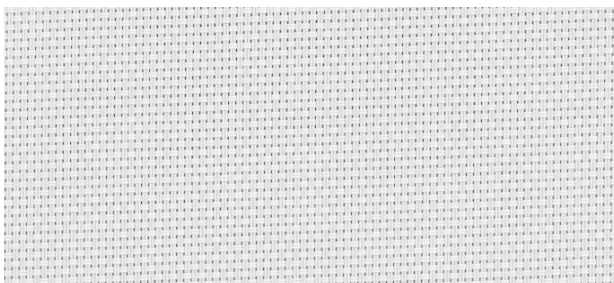
PROWEAVE™ - R

Openness | 3% 5%

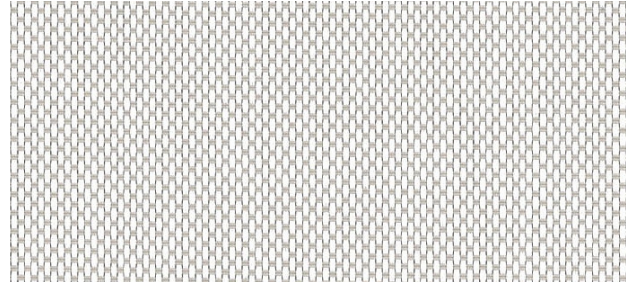


Pewter

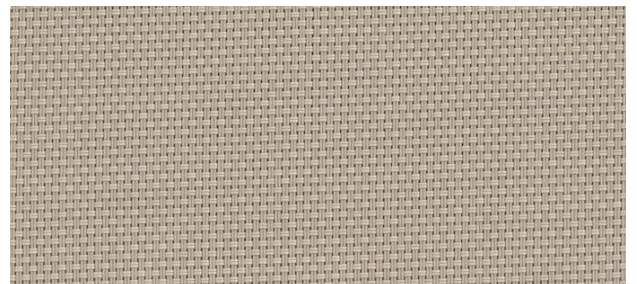
Shown in Openness 3%



Chalk



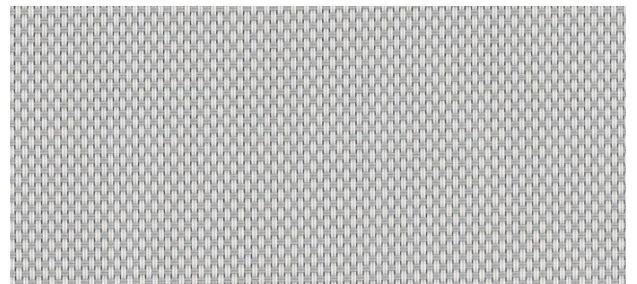
Alabaster



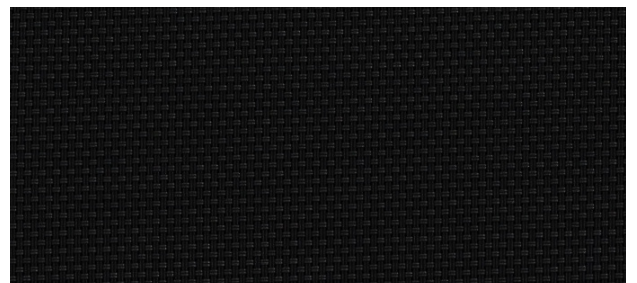
Pebblestone



Granite



Greystone



Ebony

PROWEAVE™ - R

Specifications



COMPOSITION

25% Polyester, 75% Vinyl



WEAVE STYLE

2x2 Basket Weave



WIDTH

98" (250 cm)

118" (300 cm)



FABRIC WEIGHT

3% 705 g/m² (20.97 oz/sqyd)

5% 530 g/m² (15.63 oz/sqyd)



FABRIC THICKNESS

3% 1.00 mm (0.039") ± 5%

5% 0.73 mm (0.029") ± 5%



UV BLOCKAGE

3% 97%

5% 95%



GREEN STANDARDS

GreenGuard Gold
Oeko-Tex Standard 100



FIRE CLASSIFICATION

NFPA 701 - 2010 TM#1
California U.S. Title 19



FIRE CLASSIFICATION



ProWeave™ - R | 3% Openness

Colour	Rs	As	Ts	Tv	SHGC
Chalk	68%	19%	13%	8%	0.30
Alabaster	58%	31%	11%	8%	0.32
Pebblestone	52%	37%	11%	6%	0.35
Granite	46%	47%	7%	5%	0.36
Greystone	39%	54%	7%	4%	0.38
Pewter	23%	72%	5%	3%	0.41
Ebony	23%	72%	5%	3%	0.41

ProWeave™ - R | 5% Openness

Colour	Rs	As	Ts	Tv	SHGC
Chalk	67%	17%	16%	11%	0.28
Alabaster	58%	28%	14%	9%	0.30
Pebblestone	51%	35%	14%	11%	0.32
Granite	45%	45%	10%	8%	0.33
Greystone	39%	51%	10%	8%	0.35
Pewter	23%	69%	8%	8%	0.37
Ebony	23%	69%	8%	8%	0.37

As (Solar Absorption) + Rs (Solar Reflection) + Ts (Solar Transmission) = 100% of solar energy. Tv = Visible Light Transmission. SHGC = Solar Heat Gain Coefficient is measured using 1/4" heat absorbing glass + fabric. All performance values are measured within tolerances of ±5%.

Contact ELITE PRO for larger fabric swatches.

© 2018, ELITE PRO, A division of Elite Vertical Blinds Mfg. Co. Ltd.