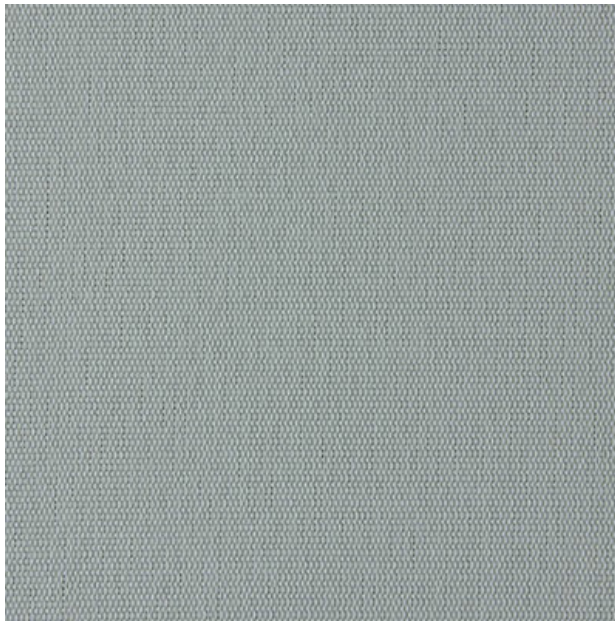


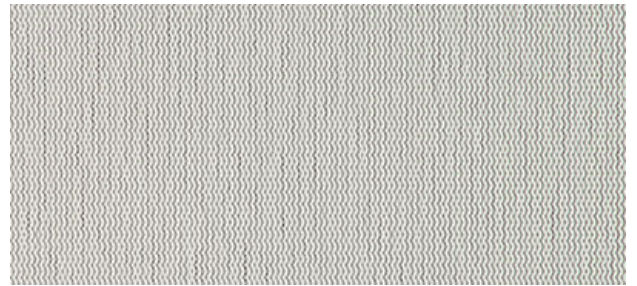
PROWEAVE™ - M

Openness | 1% 3% 5%



Pearl/Pearl

Shown in Openness 3%



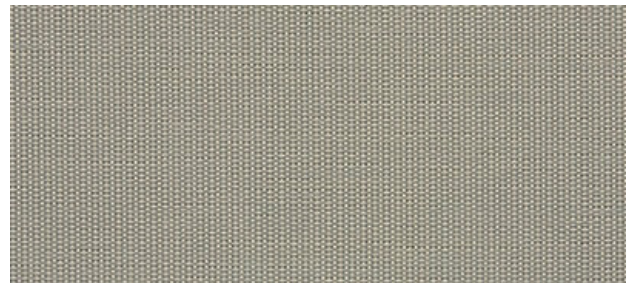
White/Pearl



Linen/Stone



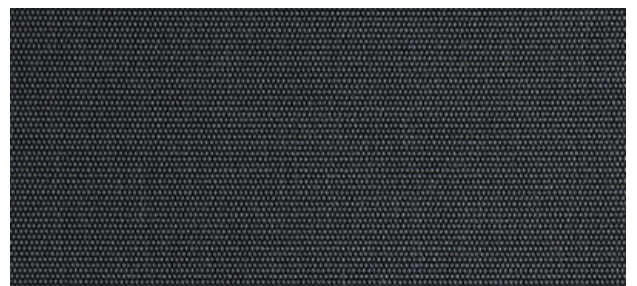
White/White



Pearl/Linen



White/Stone



Charcoal/Grey



White/Linen



Charcoal/Charcoal

PROWEAVE™ - M

Specifications



COMPOSITION

36% Fiberglass, 64% Vinyl



WEAVE STYLE

1x2 Rib Weave



WIDTH

78" (200 cm)
98" (250 cm)
122" (310 cm)



FABRIC WEIGHT

1% 445 g/m² (13.12 oz/sqyd)
3% 432 g/m² (12.74 oz/sqyd)
5% 385 g/m² (11.35 oz/sqyd)



FABRIC THICKNESS

1% 0.56 mm (0.022") ± 5%
3% 0.55 mm (0.022") ± 5%
5% 0.55 mm (0.022") ± 5%



UV BLOCKAGE

1% 99%
3% 97%
5% 95%



GREEN STANDARDS

GreenGuard Gold
Fungal Resistance - ASTM E2180
ASTM G21
RoHS - Lead Free



FIRE CLASSIFICATION

NFPA 701-10 TM#1
CAN/ULC-S109-03 Small &
Large Scale Flame Test
California U.S. Title 19



FIRE CLASSIFICATION



ProWeave™ - M | 1% Openness

Colour	Rs	As	Ts	Tv	SHGC % Improvement on Commercial Glazing	SHGC Residential Glazing
White/White	76%	10%	15%	12%	63%	0.24
White/Stone	67%	12%	18%	16%	55%	0.30
White/Linen	67%	18%	15%	12%	55%	0.29
White/Pearl	59%	30%	9%	7%	50%	0.32
Linen/Stone	50%	29%	21%	18%	42%	0.39
Pearl/Linen	36%	56%	8%	5%	34%	0.44
Pearl/Pearl	32%	63%	5%	4%	26%	0.45
Charcoal/Grey	7%	91%	2%	2%	18%	0.56
Charcoal/Charcoal	4%	95%	1%	1%	16%	0.57

ProWeave™ - M | 3% Openness

Colour	Rs	As	Ts	Tv	SHGC % Improvement on Commercial Glazing	SHGC Residential Glazing
White/White	71%	11%	18%	16%	55%	0.29
White/Stone	62%	17%	21%	18%	47%	0.35
White/Linen	64%	21%	15%	11%	50%	0.33
White/Pearl	54%	36%	10%	8%	45%	0.37
Linen/Stone	51%	28%	21%	16%	39%	0.41
Pearl/Linen	40%	49%	11%	8%	34%	0.46
Pearl/Pearl	34%	59%	7%	5%	29%	0.48
Charcoal/Grey	8%	90%	2%	2%	16%	0.61
Charcoal/Charcoal	4%	93%	3%	3%	13%	0.63

ProWeave™ - M | 5% Openness

Colour	Rs	As	Ts	Tv	SHGC % Improvement on Commercial Glazing	SHGC Residential Glazing
White/White	71%	10%	19%	16%	55%	0.30
White/Stone	61%	18%	21%	18%	47%	0.36
White/Linen	61%	20%	19%	15%	47%	0.36
White/Pearl	52%	33%	15%	12%	42%	0.40
Linen/Stone	50%	28%	22%	18%	37%	0.19
Pearl/Linen	39%	49%	12%	9%	32%	0.47
Pearl/Pearl	33%	57%	10%	7%	29%	0.50
Charcoal/Grey	8%	86%	6%	5%	13%	0.63
Charcoal/Charcoal	4%	93%	3%	3%	11%	0.64

As (Solar Absorption) + Rs (Solar Reflection) + Ts (Solar Transmission) = 100% of solar energy. Tv = Visible Light Transmission. Glass performance tests for Solar Heat Gain Coefficient (SHGC) were conducted using the Lawrence Berkeley National Laboratory Window 7.3 NFRC certified software. SHGC % improvement for commercial applications is based on a standard commercial glass makeup of Double Glazing 6 mm / 1/2" air / 6 mm with low E on surface #2. SHGC for residential applications is based on a default residential glass makeup of 3mm clear glass / 1/2" air / 3mm clear glass. Results for SHGC were obtained using the center of glass. All performance values are measured within tolerances of ±5%.

Contact ELITE PRO for larger fabric swatches.

© 2018, ELITE PRO, A division of Elite Vertical Blinds Mfg. Co. Ltd.