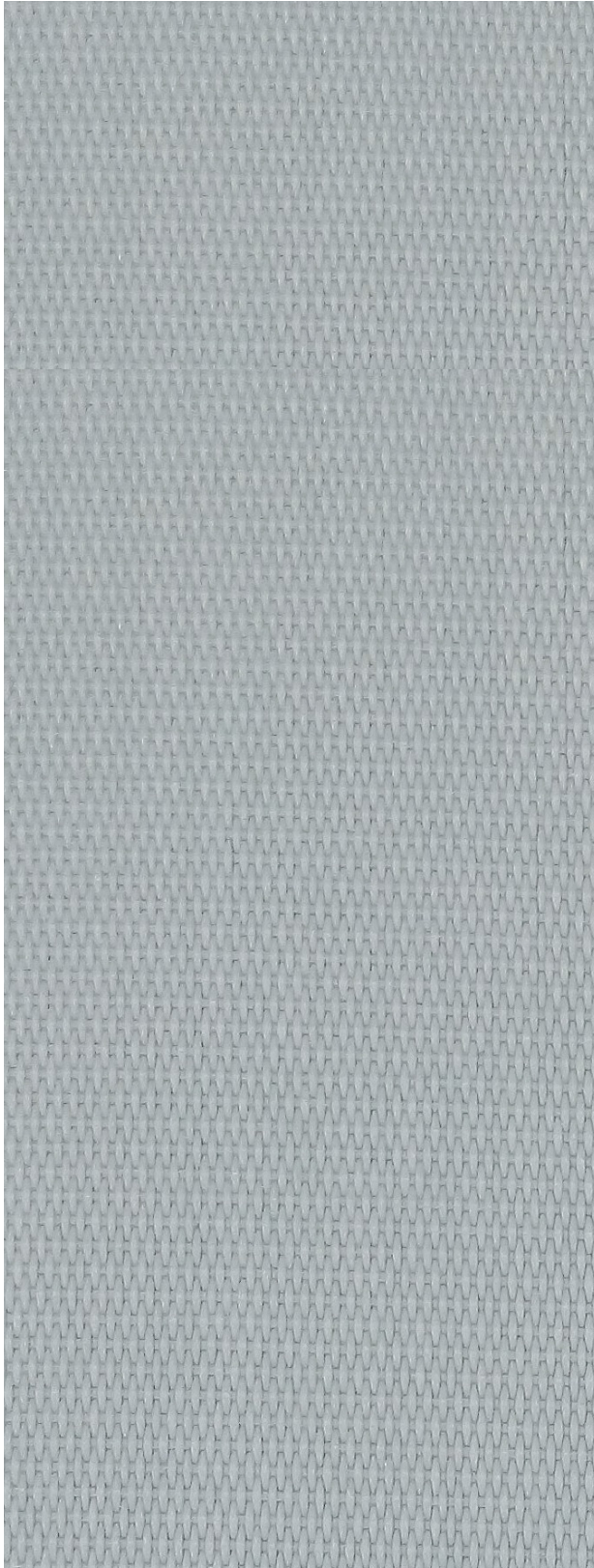


# PROWEAVE™ - F

Openness | 1%



Platinum

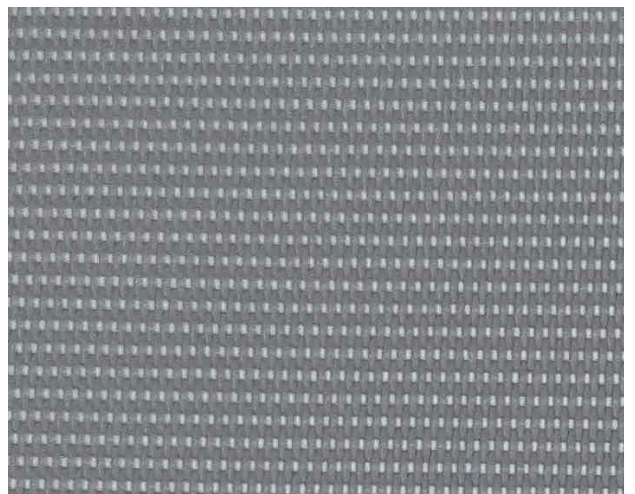
Shown in Openness 1%



White



Alabaster



Husky Grey

# PROWEAVE™ - F

## Specifications



### COMPOSITION

25% Polyester, 75% Vinyl



### WEAVE STYLE

Plain Weave



### WIDTH

72" (180 cm)  
98" (250 cm)



### FABRIC WEIGHT

0% 588 g/m<sup>2</sup> (17.34 oz/sqyd)



### FABRIC THICKNESS

0% 0.92 mm (0.036") ± 5%



### UV BLOCKAGE

0% 99%



### GREEN STANDARDS

GreenGuard Gold  
Fungal Resistance ASTM G21



### FIRE CLASSIFICATION

NFPA 701 2004 M1



### FIRE CLASSIFICATION



## ProWeave™ - F | 1% Openness

Colour	Rs	As	Ts	Tv	SHGC
White	76%	11%	13%	9%	0.28
Alabaster	70%	21%	9%	5%	0.30
Platinum	38%	58%	4%	2%	0.40
Husky Grey	35%	62%	3%	2%	0.41

As (Solar Absorption) + Rs (Solar Reflection) + Ts (Solar Transmission) = 100% of solar energy. Tv = Visible Light Transmission. SHGC = Solar Heat Gain Coefficient is measured using 1/4" heat absorbing glass + fabric. All performance values are measured within tolerances of ±5%.

Contact ELITE PRO for larger fabric swatches.

© 2018, ELITE PRO, A division of Elite Vertical Blinds Mfg. Co. Ltd.