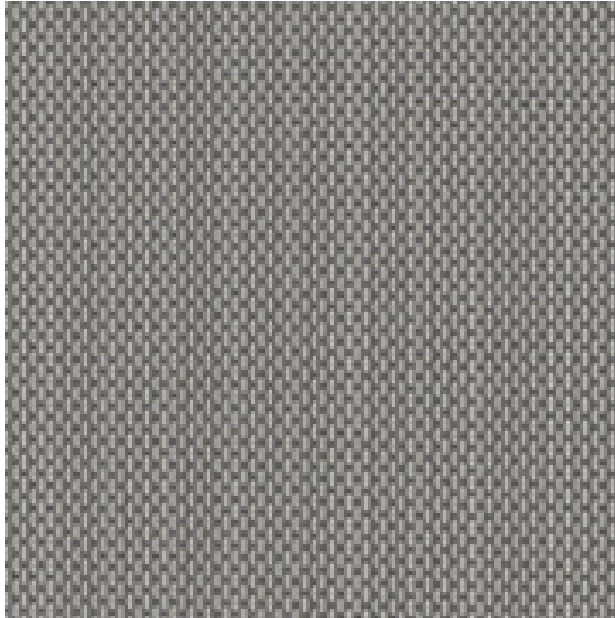


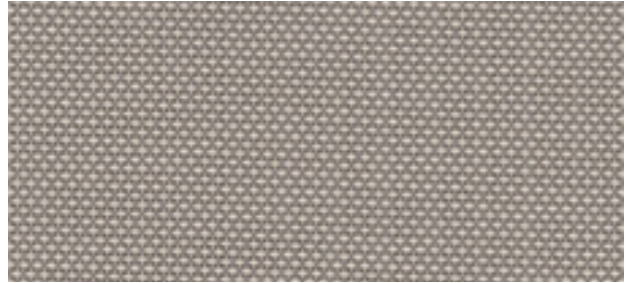
PROWEAVE™ - E

Openness | 1% 3% 5% 10%*

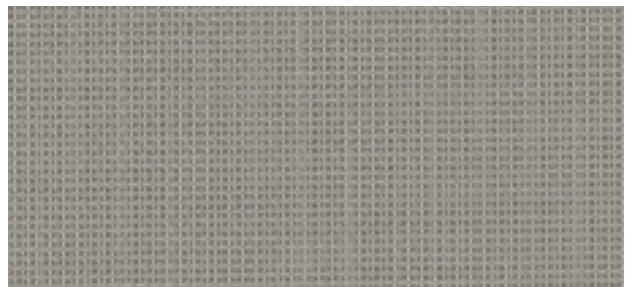


Pearl/Grey

Shown in Openness 3%



Pearl/Linen



Pearl/Pearl



White/White



Charcoal/Grey/Stone



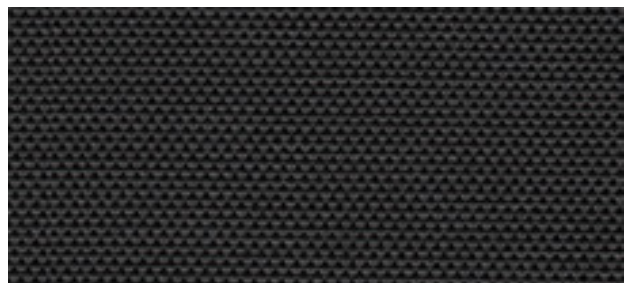
White/Linen



Charcoal/Grey



White/Pearl



Charcoal/Charcoal

PROWEAVE™ - E

Specifications



COMPOSITION

36% Fiberglass, 64% Vinyl



WEAVE STYLE

2x2 Basket Weave



WIDTH

78" (200 cm)
98" (250 cm)
122" (310 cm)



FABRIC WEIGHT

- 1% 452 g/m² (13.33 oz/sqyd)
- 3% 393 g/m² (11.59 oz/sqyd)
- 5% 363 g/m² (10.71 oz/sqyd)



FABRIC THICKNESS

- 1% 0.52 mm (0.020") ± 5%
- 3% 0.43 mm (0.017") ± 5%
- 5% 0.41 mm (0.016") ± 5%



UV BLOCKAGE

- 1% 99%
- 3% 97%
- 5% 95%



GREEN STANDARDS

GreenGuard Gold
Fungal Resistance -
ASTM E2180 & G21
RoHS - Lead Free



FIRE CLASSIFICATION

NFPA 701-10 TM#1
CAN/ULC-S109-03 Small &
Large Scale Flame Test
California U.S. Title 19



FIRE CLASSIFICATION



ProWeave™ - E | 1% Openness

Colour	Rs	As	Ts	Tv	IR Reflection	SHGC % Improvement on Commercial Glazing	SHGC Residential Glazing
White/White	75%	11%	14%	11%	73%	61%	0.25
White/Linen	66%	20%	14%	10%	65%	53%	0.31
White/Pearl	58%	33%	9%	6%	55%	47%	0.34
Pearl/Linen	39%	54%	7%	5%	37%	37%	0.42
Pearl/Pearl	33%	62%	5%	3%	31%	34%	0.45
Pearl/Grey	29%	66%	5%	3%	30%	29%	0.47
Charcoal/Grey-Stone	11%	87%	2%	2%	11%	18%	0.54
Charcoal/Grey	9%	88%	3%	2%	9%	16%	0.58
Charcoal/Charcoal	4%	95%	1%	1%	3%	13%	0.60

ProWeave™ - E | 3% Openness

Colour	Rs	As	Ts	Tv	IR Reflection	SHGC % Improvement on Commercial Glazing	SHGC Residential Glazing
White/White	73%	11%	16%	13%	70%	58%	0.28
White/Linen	63%	21%	16%	12%	63%	47%	0.34
White/Pearl	52%	38%	10%	8%	49%	42%	0.38
Pearl/Linen	39%	48%	13%	11%	38%	34%	0.44
Pearl/Pearl	32%	59%	9%	8%	31%	32%	0.47
Pearl/Grey	27%	63%	10%	8%	28%	26%	0.50
Charcoal/Grey-Stone	13%	80%	7%	6%	13%	18%	0.55
Charcoal/Grey	10%	85%	5%	5%	11%	16%	0.60
Charcoal/Charcoal	5%	91%	4%	4%	5%	13%	0.62

ProWeave™ - E | 5% Openness

Colour	Rs	As	Ts	Tv	IR Reflection	SHGC % Improvement on Commercial Glazing	SHGC Residential Glazing
White/White	71%	9%	20%	17%	68%	55%	0.30
White/Linen	62%	18%	20%	16%	61%	47%	0.36
White/Pearl	51%	37%	12%	9%	49%	39%	0.40
Pearl/Linen	37%	48%	15%	12%	36%	34%	0.45
Pearl/Pearl	31%	57%	12%	10%	29%	29%	0.48
Pearl/Grey	27%	61%	12%	10%	27%	26%	0.50
Charcoal/Grey-Stone	12%	79%	9%	9%	11%	18%	0.56
Charcoal/Grey	10%	83%	7%	7%	11%	16%	0.62
Charcoal/Charcoal	6%	90%	4%	4%	6%	13%	0.64

*Samples & specifications for 10% available upon request. As (Solar Absorption) + Rs (Solar Reflection) + Ts (Solar Transmission) = 100% of solar energy. Tv = Visible Light Transmission. Glass performance tests for Solar Heat Gain Coefficient (SHGC) were conducted using the Lawrence Berkeley National Laboratory Window 7.3 NFRC certified software. SHGC % improvement for commercial applications is based on a standard commercial glass makeup of Double Glazing 6 mm / 1/2" air / 6 mm with low E on surface #2. SHGC for residential applications is based on a default residential glass makeup of 3mm clear glass / 1/2" air / 3mm clear glass. Results for SHGC were obtained using the center of glass. All performance values are measured within tolerances of ±5%.

Contact ELITE PRO for larger fabric swatches. © 2018, ELITE PRO, A division of Elite Vertical Blinds Mfg. Co. Ltd.