



VINYL

Blackout

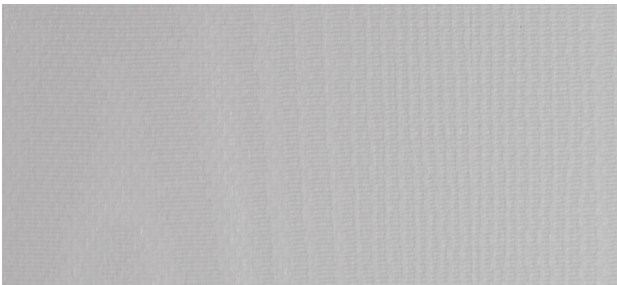


Pewter



Boucle White

*AVAILABLE IN XL

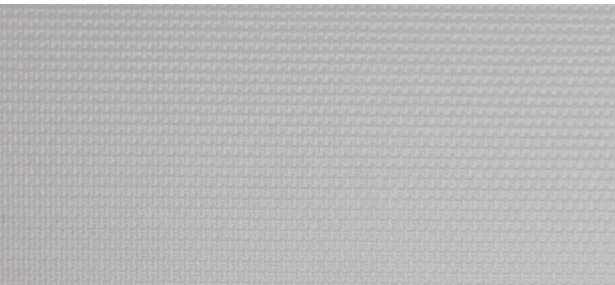


Moire White

*AVAILABLE IN XL

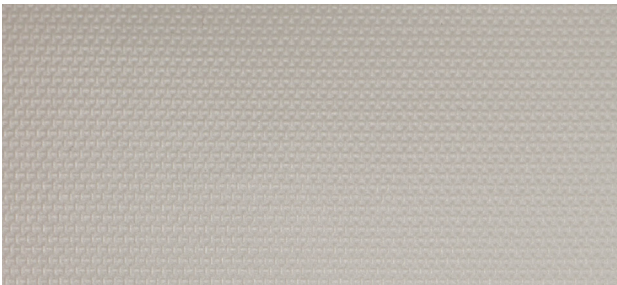


Textured White



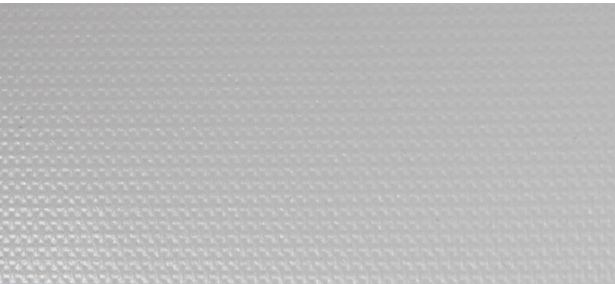
Azure White

*AVAILABLE IN XL



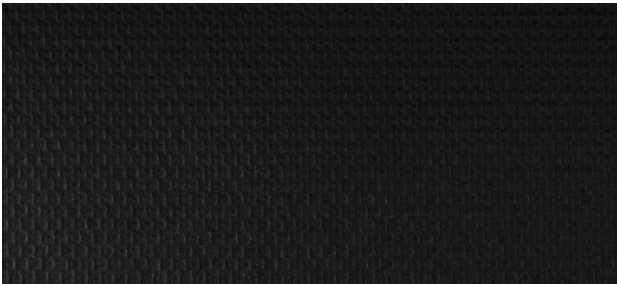
Clay

*AVAILABLE IN XL



Matte White

*AVAILABLE IN XL



Black



VINYL

Specifications



COMPOSITION

27% Fiberglass, 73% Vinyl



WEAVE STYLE

4-Ply Vinyl Coated Fiberglass
(with white backing)



WIDTH

72" (183 cm)
XL: 98" (250 cm)
XL: 120" (300 cm)



FABRIC WEIGHT

424 g/m² (12.50 oz/sqyd)
XL: 495 g/m² (14.60 oz/sqyd)



FABRIC THICKNESS

0.31 mm (0.012") ± 5%
XL: 0.36 mm (0.014") ± 5%



UV BLOCKAGE

100%



GREEN STANDARDS

GreenGuard Gold
Lead Free - RoHS, ASTM D4834-03,
CSA-CAN 600.08 Fungal Resistance
-
ASTM E1428-9 & ASTM G21



FIRE CLASSIFICATION

NFPA 701-89 Large Scale
NFPA 701 Small Scale
California U.S. Title 19



CERTIFICATIONS



VINYL | Blackout

(72" width)

Colour	Rs	As	Ts	Tv	SHGC
Azure White	77%	23%	0%	0%	0.22
Matte White	77%	23%	0%	0%	0.22
Boucle White	77%	23%	0%	0%	0.22
Moire White	77%	23%	0%	0%	0.22
Textured White	77%	23%	0%	0%	0.22
Clay	77%	23%	0%	0%	0.22
Pewter	77%	23%	0%	0%	0.22
Black	77%	23%	0%	0%	0.22

VINYL XL | Blackout

(98" & 120" width)

Colour	Rs	As	Ts	Tv	SHGC
Azure White	77%	23%	0%	0%	0.25
Matte White	79%	21%	0%	0%	0.25
Boucle White	79%	21%	0%	0%	0.25
Moire White	79%	21%	0%	0%	0.25
Clay	79%	21%	0%	0%	0.25

As (Solar Absorption) + Rs (Solar Reflection) + Ts (Solar Transmission) = 100% of solar energy. Tv = Visible Light Transmission. SHGC = Solar Heat Gain Coefficient is measured using 1/4" heat absorbing glass + fabric. All performance values are measured within tolerances of ±5%.

Contact ELITE PRO for larger fabric swatches.

© 2018, ELITE PRO, A division of Elite Vertical Blinds Mfg. Co. Ltd.