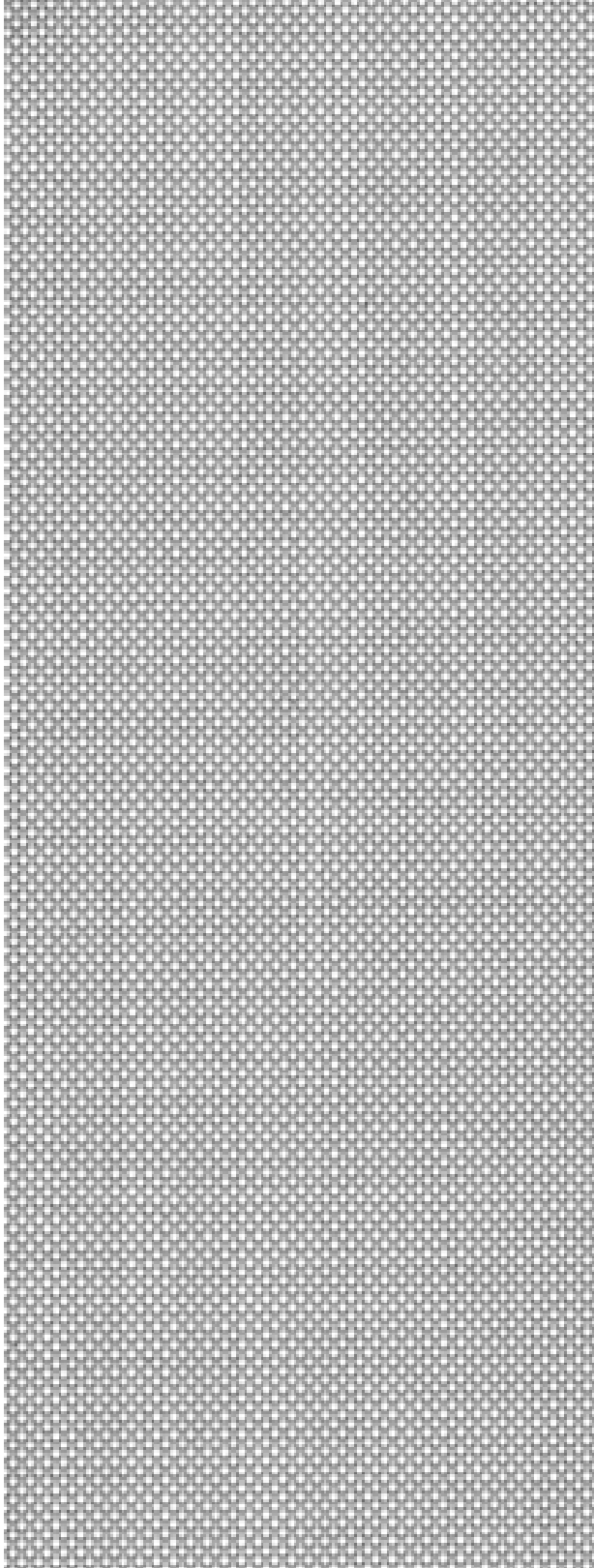
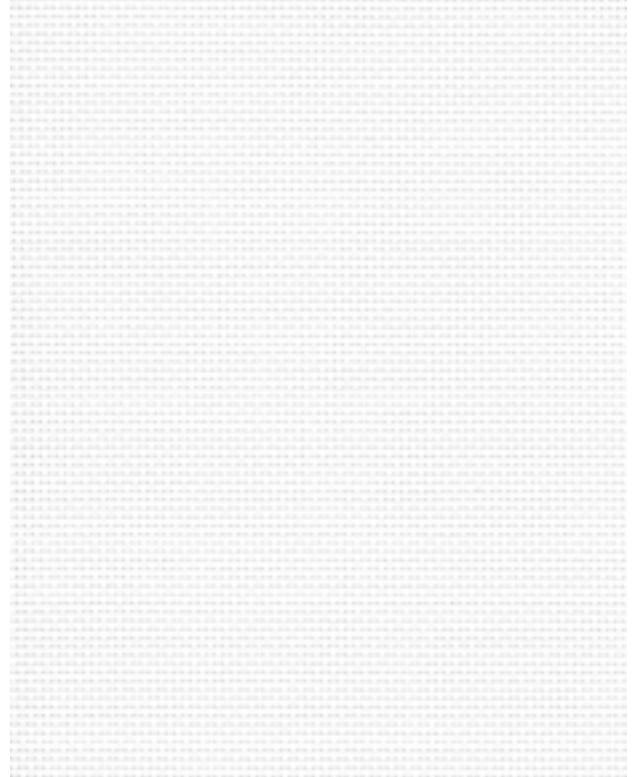


MALIBU

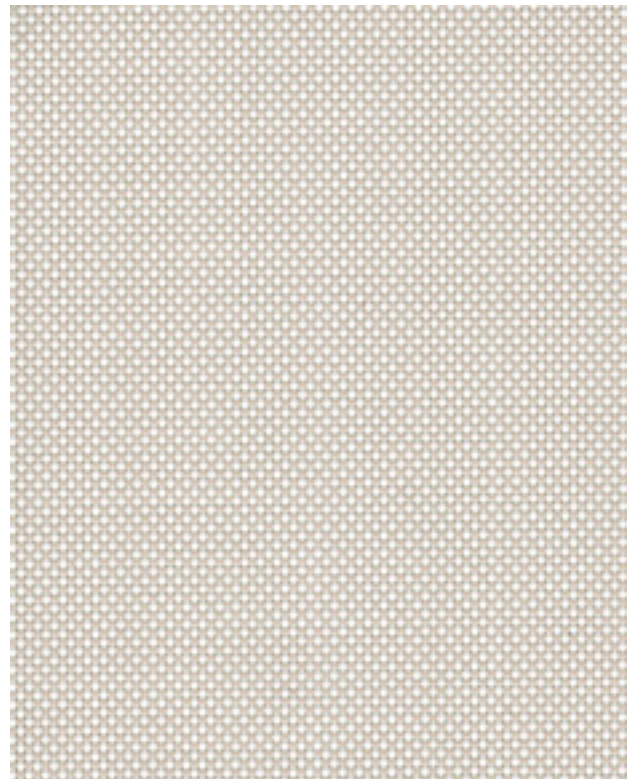
Blackout



White/Pearl



White



White/Linen

MALIBU

Specifications



COMPOSITION

22% Polyester, 78% Vinyl



WEAVE STYLE

2x2 Basket Weave with Vinyl Blackout Lining



WIDTH

118" (300 cm)



FABRIC WEIGHT

580 g/m² (17.11 oz/sqyd)



FABRIC THICKNESS

0.58 mm (0.023") ± 5%



UV BLOCKAGE

100%



GREEN STANDARDS

GreenGuard Gold
Oeko-Tex Standard 100



FIRE CLASSIFICATION

NFPA 701



CERTIFICATIONS



MALIBU | Blackout

Colour	Rs	As	Ts	Tv	SHGC
White	71%	29%	0%	0%	0.19
White/Linen	71%	29%	0%	0%	0.19
White/Pearl	71%	29%	0%	0%	0.19

As (Solar absorption) + Rs (Solar Reflection) + Ts (Solar Transmission) = 100% of solar energy. Tv = Visible Light Transmission. SHGC = Solar Heat Gain Coefficient is measured using 1/4" heat absorbing glass + fabric All performance values are measured within tolerances of ±5%.

Contact ELITE PRO for larger fabric swatches.

© 2018, ELITE PRO, A division of Elite Vertical Blinds Mfg. Co. Ltd.

