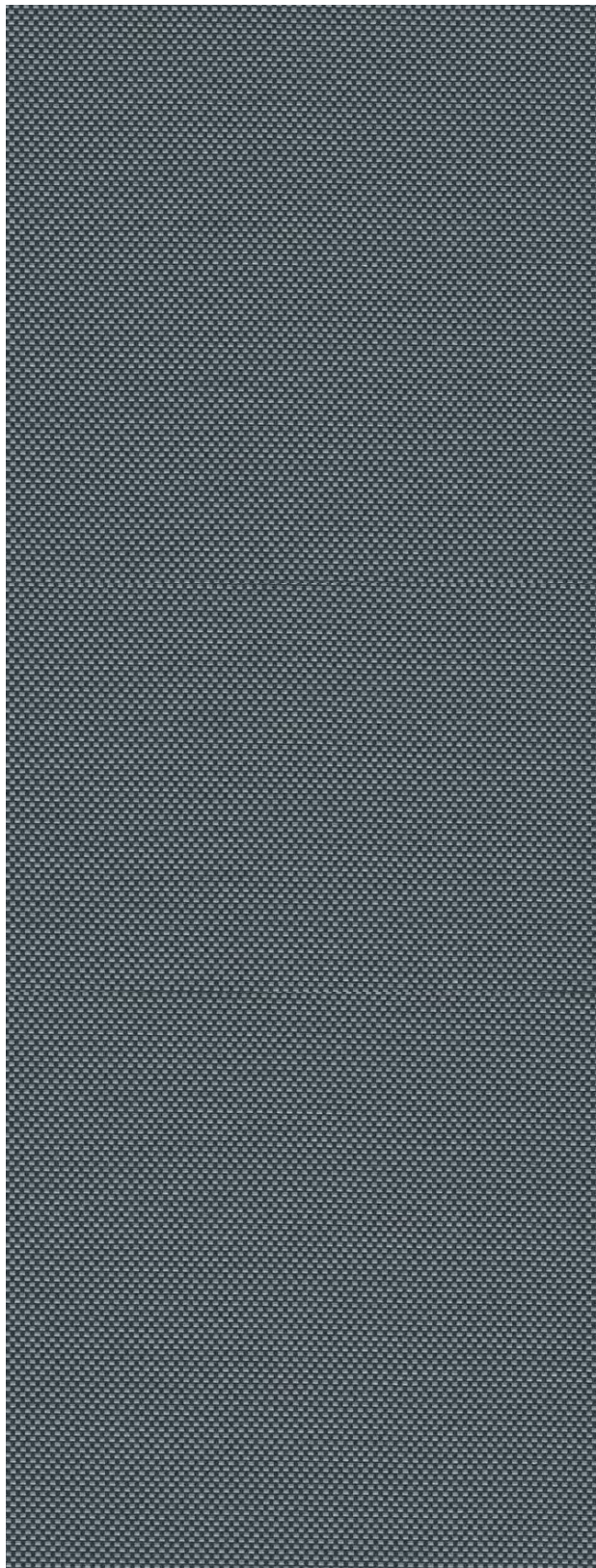


# E SCREEN

with KoolBlack® Technology

Openness | 1% 3% 5%



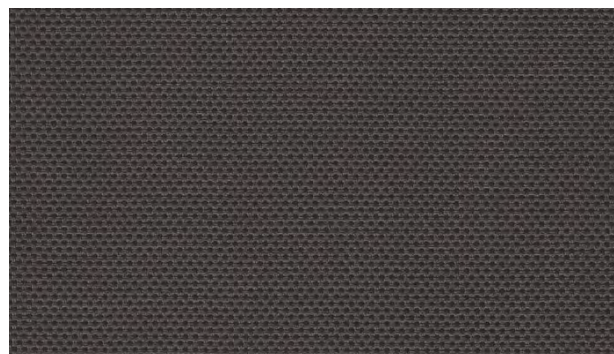
Charcoal/Grey/Stone Shown in Openness 3%



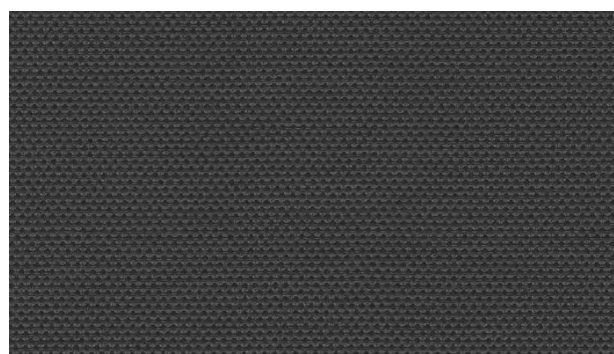
Charcoal/Apricot



Charcoal/Grey



Charcoal/Cocoa



Charcoal/Charcoal

## KOOLER THAN BEING COOL

Cooling technology woven into dark-coloured screens.



### 1 COOLING TECH

KOOLBLACK™ Technology enhances the ability of dark-coloured yarns to reflect up to 33% more heat when compared to other dark-coloured fabrics.

### 2 EXTERIOR AESTHETICS

KOOLBLACK™ Technology allows architects to choose dark-coloured fabrics that blend beautifully with a building's glazing system to preserve the intended exterior aesthetics.

### 3 INTERIOR DESIGN

With KOOLBLACK™ technology infused into every yarn, designers can confidently select dark-coloured shades that cut glare and offer crisp outside views, without compromising on heat protection.



# E SCREEN

with KoolBlack® Technology



## Specifications



### COMPOSITION

36% Fiberglass, 64% Vinyl



### WEAVE STYLE

2x2 Basket Weave



### WIDTH

98" (250 cm)  
122" (310 cm)



### FABRIC WEIGHT

- 1% 439 g/m<sup>2</sup> (12.95 oz/sqyd)
- 3% 382 g/m<sup>2</sup> (11.27 oz/sqyd)
- 5% 358 g/m<sup>2</sup> (10.56 oz/sqyd)



### FABRIC THICKNESS

- 1% 0.53 mm (0.021") ± 5%
- 3% 0.51 mm (0.020") ± 5%
- 5% 0.47 mm (0.019") ± 5%



### UV BLOCKAGE

- 1% 99%
- 3% 97%
- 5% 95%



### GREEN STANDARDS

GreenGuard Gold  
Fungal Resistance -  
ASTM E2180 & ASTM G21  
RoHS - Lead Free



### FIRE CLASSIFICATIONS

NFPA 701-10 TM#1,  
California U.S. Title 19  
CAN/ULC-S109-03 Small &  
Large Flame Test



### CERTIFICATIONS



### E Screen | 1% Openness

Colour	Rs	As	Ts	Tv	IR Reflection	SHGC % Improvement on Commercial Glazing	SHGC Residential Glazing
Charcoal/Apricot	39%	47%	14%	3%	62%	24%	0.46
Charcoal/Grey/Stone	38%	50%	12%	3%	63%	24%	0.47
Charcoal/Grey	40%	49%	11%	2%	67%	24%	0.46
Charcoal/Cocoa	36%	52%	12%	2%	64%	21%	0.48
Charcoal/Charcoal	35%	53%	12%	2%	64%	18%	0.48

### E Screen | 3% Openness

Colour	Rs	As	Ts	Tv	IR Reflection	SHGC % Improvement on Commercial Glazing	SHGC Residential Glazing
Charcoal/Apricot	38%	44%	18%	6%	58%	21%	0.50
Charcoal/Grey/Stone	38%	46%	16%	7%	60%	24%	0.48
Charcoal/Grey	40%	46%	14%	5%	65%	24%	0.47
Charcoal/Cocoa	35%	48%	17%	6%	61%	16%	0.52
Charcoal/Charcoal	34%	49%	17%	6%	61%	16%	0.53

### E Screen | 5% Openness

Colour	Rs	As	Ts	Tv	IR Reflection	SHGC % Improvement on Commercial Glazing	SHGC Residential Glazing
Charcoal/Apricot	37%	42%	21%	9%	59%	18%	0.52
Charcoal/Grey/Stone	36%	45%	19%	9%	58%	21%	0.49
Charcoal/Grey	38%	45%	17%	7%	62%	21%	0.48
Charcoal/Cocoa	32%	49%	19%	7%	57%	16%	0.55
Charcoal/Charcoal	33%	49%	18%	6%	60%	16%	0.54

## KOOLER THAN BEING COOL

Cooling technology woven into dark-coloured screens.

As (Solar Absorption) + Rs (Solar Reflection) + Ts (Solar Transmission) = 100% of solar energy. Tv = Visible Light Transmission. Glass performance tests for Solar Heat Gain Coefficient (SHGC) were conducted using the Lawrence Berkeley National Laboratory Window 7.3 NFRC certified software. SHGC % improvement for commercial applications is based on a standard commercial glass makeup of Double Glazing 6 mm / 1/2" air / 6 mm with low E on surface #2. SHGC for residential applications is based on a default residential glass makeup of 3mm clear glass / 1/2" air / 3mm clear glass. Results for SHGC were obtained using the center of glass. All performance values are measured within tolerances of ±5%.

Contact ELITE PRO for larger fabric swatches.

© 2018, ELITE PRO, A division of Elite Vertical Blinds Mfg. Co. Ltd.

eliteproshading.com

1-800-387-3566

PERFORMANCE

PERFORMANCE