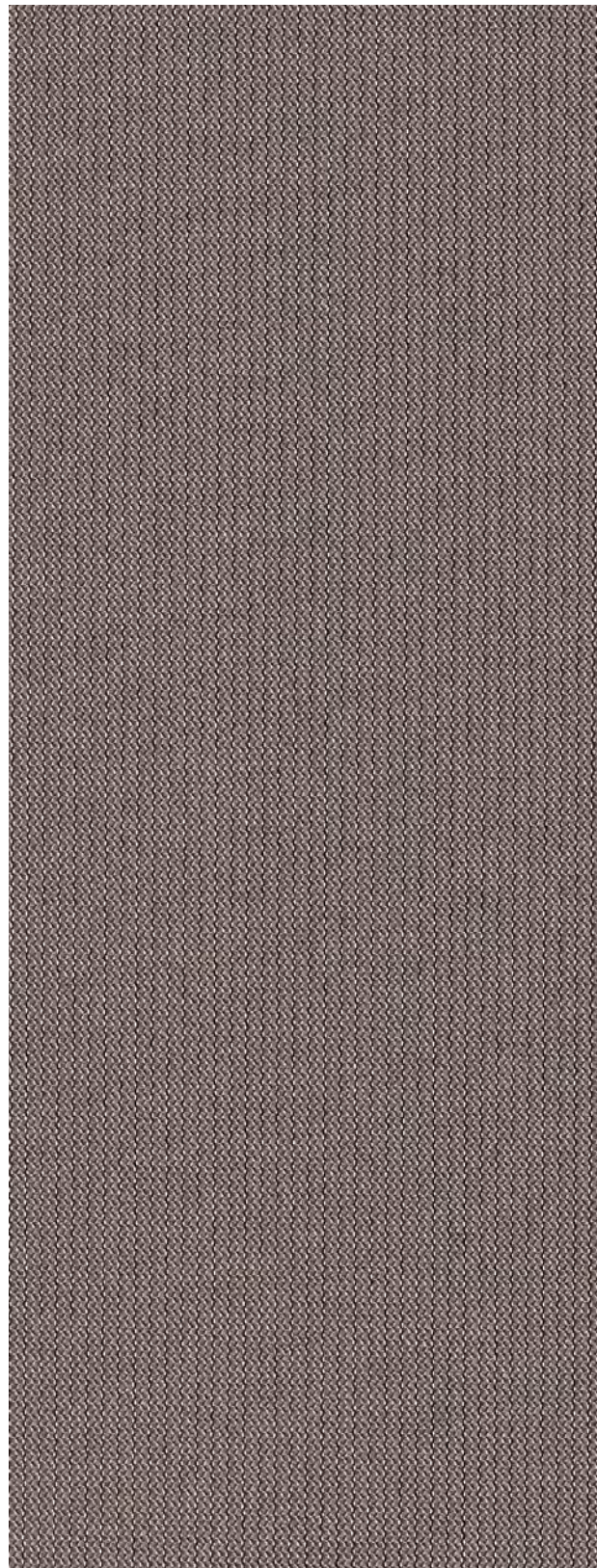


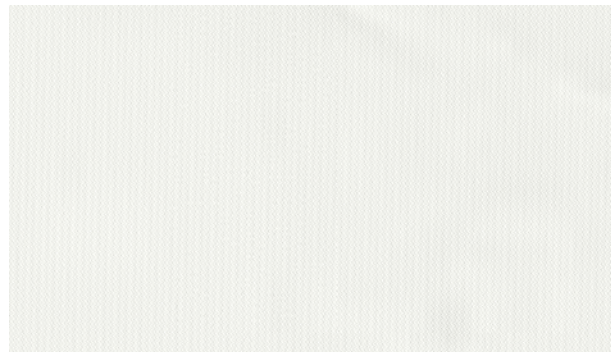
GreenScreen Revive®

Openness | 1% 5% PVC FREE

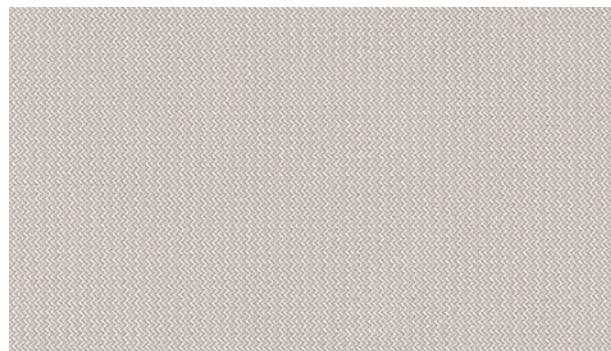


Pewter

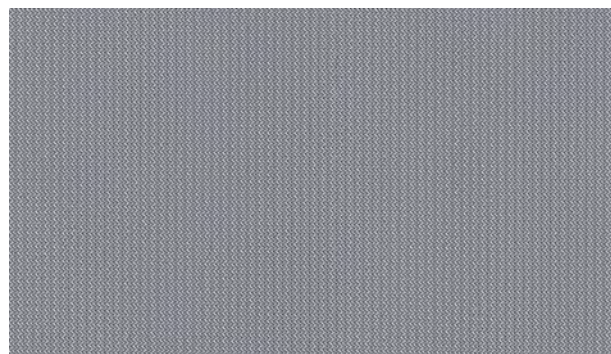
Shown in Openness 1%



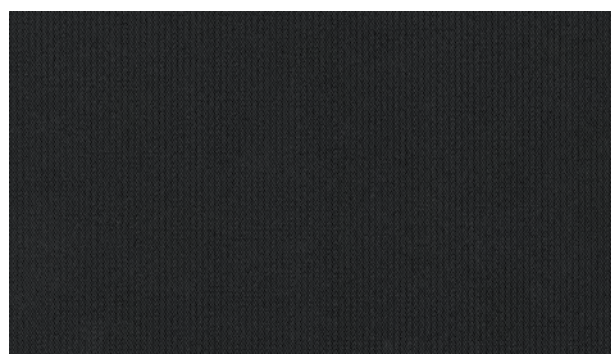
White



Sand



Stone



Onyx

THE GREENER SHADE

As beautiful as it is sustainable.



GREEN CYCLE

GreenScreen Revive® is woven from 89% Repreve® yarns which are produced from recycled water bottles and other recycled plastics. There up to 11 recycled water bottles per yard of fabric that are responsibly diverted from landfills.

CARBON FOOTPRINT

By using Repreve® yarns rather than virgin polyester, GreenScreen Revive® reduces energy consumption by over 6%, water consumption by over 50%, and greenhouse gasses by over 34%.

CRADLE-TO-CRADLE

GreenScreen Revive® can be recycled back into polyester yarns at the end of its product lifecycle. This has earned it the prestigious Cradle to Cradle™ BRONZE Certification.

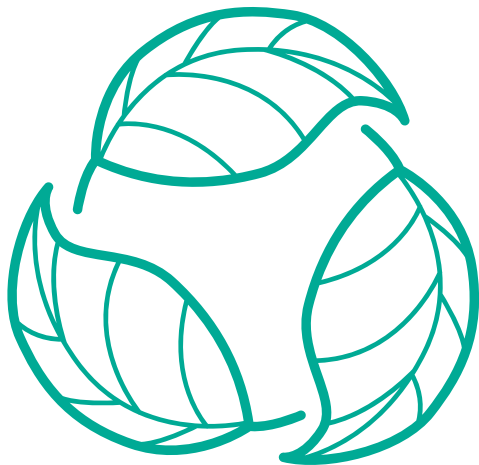


GreenScreen Revive®

Specifications



	COMPOSITION 100% Polyester (89% Recycled Content) PVC Free		WEAVE STYLE Warp Knit		WIDTH 118" (300 cm)
	FABRIC WEIGHT 1% 199 g/m ² (5.87 oz/sqyd) 5% 170 g/m ² (5.01 oz/sqyd)		FABRIC THICKNESS 1% 0.49 mm (0.019") ± 5% 5% 0.44 mm (0.017") ± 5%		UV BLOCKAGE 1% 99% 5% 95%
	GREEN STANDARDS ASTM G21 Fungal Resistance GreenGuard Gold Cradle-To-Cradle Bronze RoHS - Lead Free		FIRE CLASSIFICATIONS CAN/ULC-S109-03 Small & Large Flame Test NFPA 701-10 TM#1 California U.S. Title 19		CERTIFICATIONS



GreenScreen Revive® | 1% Openness

Colour	Rs	As	Ts	Tv	SHGC % Improvement on Commercial Glazing	SHGC Residential Glazing
White	66%	6%	28%	27%	50%	0.33
Sand	61%	13%	26%	23%	45%	0.36
Stone	52%	24%	24%	17%	34%	0.42
Pewter	43%	38%	19%	8%	24%	0.46
Onyx	34%	49%	17%	5%	18%	0.51

GreenScreen Revive® | 5% Openness

Colour	Rs	As	Ts	Tv	SHGC % Improvement on Commercial Glazing	SHGC Residential Glazing
White	56%	6%	38%	37%	39%	0.42
Sand	11%	54%	35%	33%	37%	0.43
Stone	49%	24%	27%	20%	32%	0.45
Pewter	37%	37%	26%	14%	21%	0.52
Onyx	31%	47%	22%	9%	16%	0.56

As (Solar Absorption) + Rs (Solar Reflection) + Ts (Solar Transmission) = 100% of solar energy. Tv = Visible Light Transmission. Glass performance tests for Solar Heat Gain Coefficient (SHGC) were conducted using the Lawrence Berkeley National Laboratory Window 7.3 NFRC certified software. SHGC % improvement for commercial applications is based on a standard commercial glass makeup of Double Glazing 6 mm / 1/2" air / 6 mm with low E on surface #2. SHGC for residential applications is based on a default residential glass makeup of 3mm clear glass / 1/2" air / 3mm clear glass. Results for SHGC were obtained using the center of glass. All performance values are measured within tolerances of ±5%.

Contact ELITE PRO for larger fabric swatches.

© 2018, ELITE PRO, A division of Elite Vertical Blinds Mfg. Co. Ltd.

THE GREENER SHADE

As beautiful as it is sustainable.