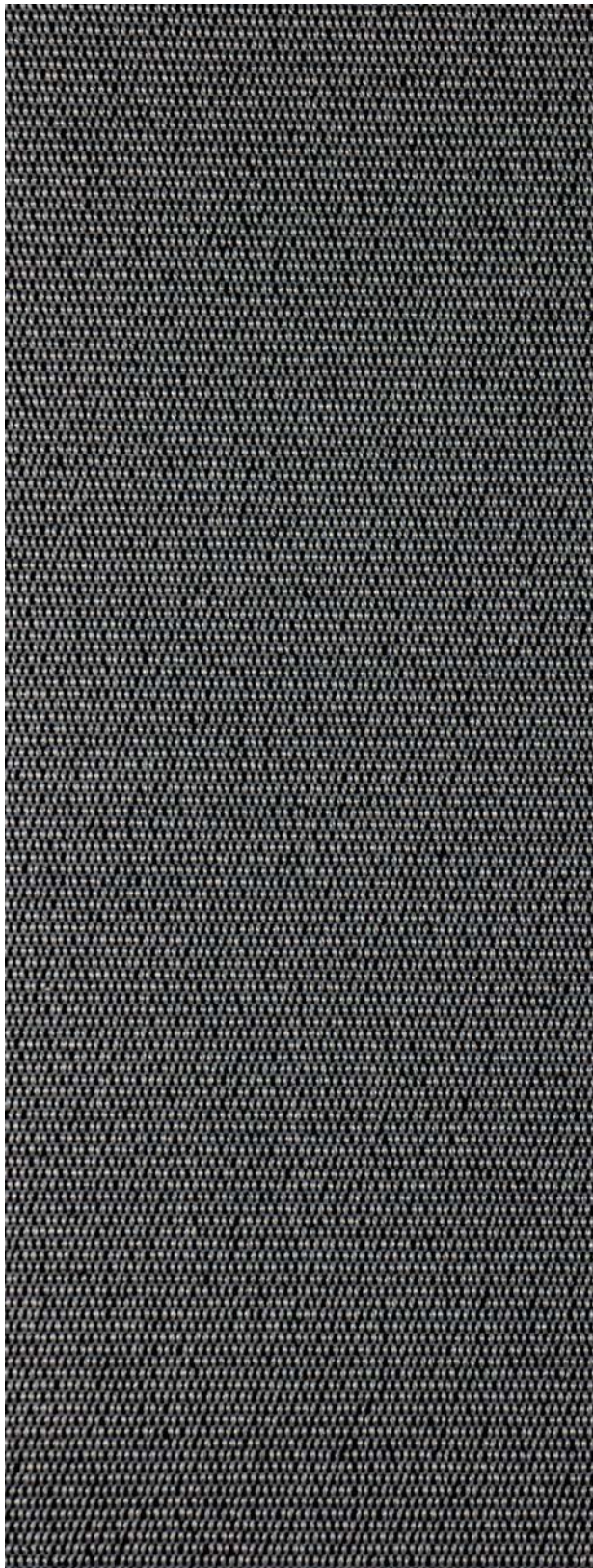


PROWEAVE™ *ECO III*

Openness | 0%

PVC FREE



Ash



White



Ivory



Light Grey



Dark Grey



Shadow

PROWEAVE™ ECO III



Specifications



COMPOSITION

100% Polyester, PVC Free



WEAVE STYLE

Plain Weave



WIDTH

118" (300 cm)



FABRIC WEIGHT

280 g/m² (8.26 oz/yd²)



FABRIC THICKNESS

0.51 mm (0.020") ± 5%



UV BLOCKAGE

99%



GREEN STANDARDS

GreenGuard Gold
Oeko-Tex Standard 100
PVC Free



FIRE CLASSIFICATION

NFPA 701



CERTIFICATIONS



ProWeave™ - ECO III | 0% Openness

Style Name	Rs	As	Ts	Tv	SHGC
Arctic	62%	10%	28%	28%	0.37
Opal	60%	11%	29%	29%	0.38
Linen	42%	42%	16%	10%	0.43
Almond	27%	67%	6%	6%	0.48
Fawn	21%	74%	5%	2%	0.50
Ash	8%	91%	1%	1%	0.54

As (Solar absorption) + Rs (Solar Reflection) + Ts (Solar Transmission) = 100% of solar energy. SHGC - Double Glazing (4/16/4), with Low E coating, argon filled. All performance values are measured within tolerances of ±5%.

Contact ELITE PRO for larger fabric swatches.

© 2018, ELITE PRO, A division of Elite Vertical Blinds Mfg. Co. Ltd.