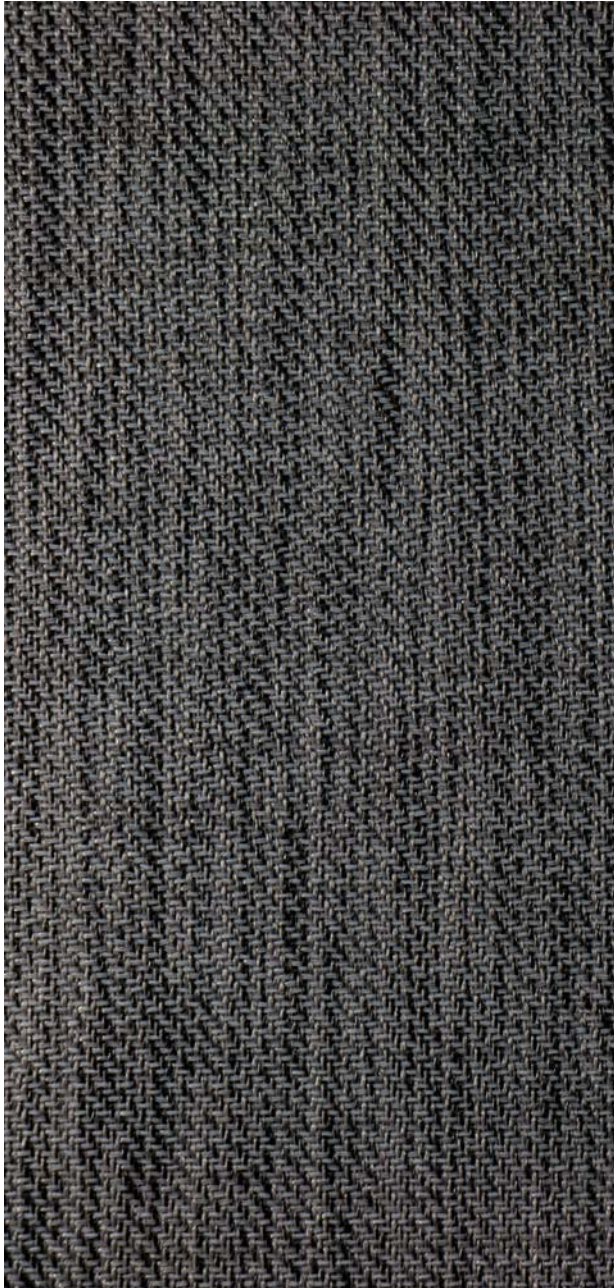


# PROWEAVE™ ECO I

Openness | 1%      PVC FREE



Ash



Opal



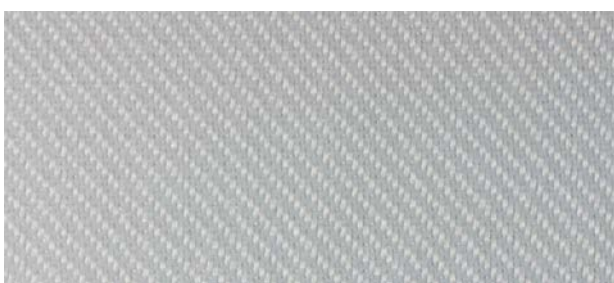
Linen



Almond



Fawn



Arctic



Shadow

# PROWEAVE™ ECO I

## Specifications



### COMPOSITION

100% Polyester, PVC Free



### WEAVE STYLE

Twill Weave



### WIDTH

118" (300 cm)



### FABRIC WEIGHT

255 g/m<sup>2</sup> (7.52 oz/yd<sup>2</sup>)



### FABRIC THICKNESS

0.41 mm (0.016") ± 5%



### UV BLOCKAGE

99%



### GREEN STANDARDS

GreenGuard Gold  
Oeko-Tex Standard 100  
PVC Free



### FIRE CLASSIFICATION

NFPA 701



### CERTIFICATIONS



## ProWeave™ - ECO I | 1% Openness

Style Name	Rs	As	Ts	Tv	SHGC
Arctic	59%	9%	32%	31%	0.38
Opal	53%	16%	31%	28%	0.40
Linen	50%	23%	27%	20%	0.41
Almond	48%	24%	27%	20%	0.41
Fawn	41%	38%	21%	15%	0.44
Ash	20%	72%	8%	6%	0.50
Shadow	18%	75%	7%	5%	0.51



As (Solar absorption) + Rs (Solar Reflection) + Ts (Solar Transmission) = 100% of solar energy. SHGC - Double Glazing (4/16/4), with Low E coating, argon filled. All performance values are measured within tolerances of ±5%

Contact ELITE PRO for larger fabric swatches.

© 2018, ELITE PRO, A division of Elite Vertical Blinds Mfg. Co. Ltd.

