

# AVILA

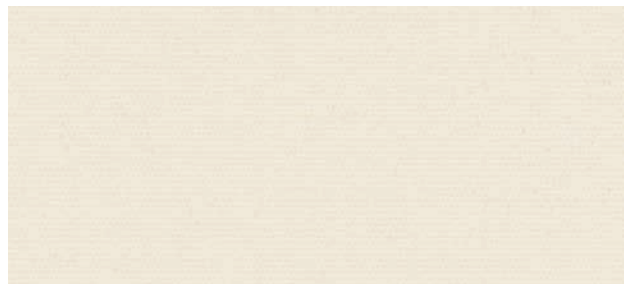
Blackout | PVC - FREE



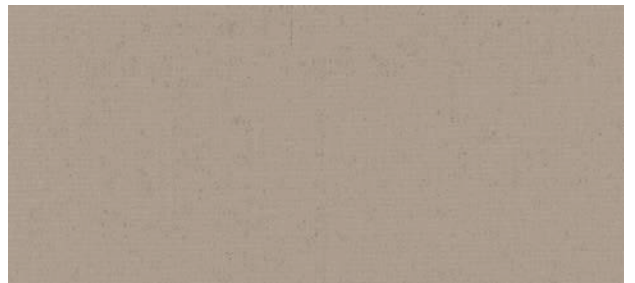
Pewter



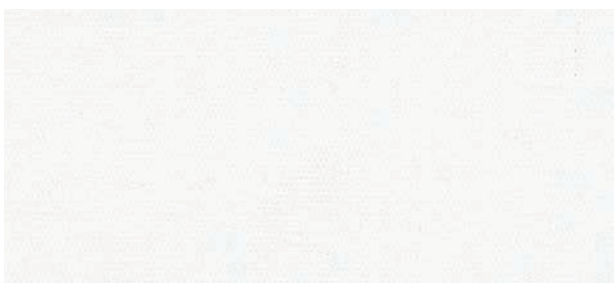
Chalk



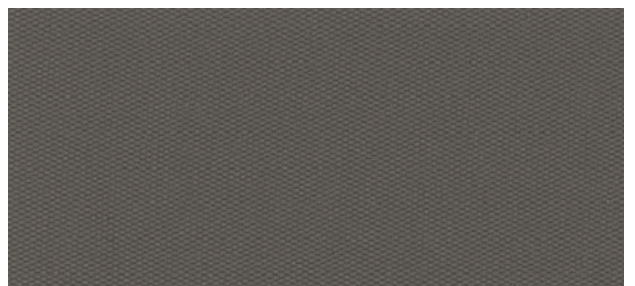
Canvas



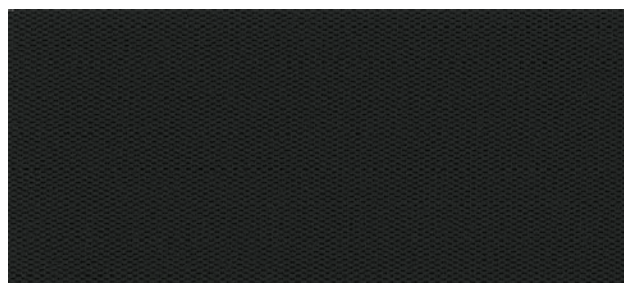
Khaki



White



Charcoal



Black



### COMPOSITION

35.5% Polyester,  
62.5% Acrylic Foamed Backing,  
PVC Free



### WEAVE STYLE

Plain Weave



### WIDTH

118" (300 cm)



### FABRIC WEIGHT

452 g/m<sup>2</sup> (13.33 oz/sqyd)



### FABRIC THICKNESS

0.57 mm (0.020") ± 5%



### UV BLOCKAGE

100%



### GREEN STANDARDS

GreenGuard Gold  
Fungal Resistance -  
ASTM E1428-9 & G21  
PVC Free



### FIRE CLASSIFICATION

NFPA 701-10 TM#1  
CAN/ULC-S109 Small &  
Large Scale



### CERTIFICATIONS



## AVILA | Blackout

Room Side Colour	Street Side Colour	Rs	As	Ts	Tv	SHGC % Improvement on Commercial Glazing
White	White	81%	19%	0%	0%	0.66
Chalk	White	66%	34%	0%	0%	0.55
Canvas	White	75%	25%	0%	0%	0.63
Khaki	White	39%	61%	0%	0%	0.37
Pewter	Pewter	18%	82%	0%	0%	0.26
Charcoal	Charcoal	38%	62%	0%	0%	0.24
Black	Black	4%	96%	0%	0%	0.16

As (Solar Absorption) + Rs (Solar Reflection) + Ts (Solar Transmission) = 100% of solar energy. Tv = Visible Light Transmission. Glass performance tests for Solar Heat Gain Coefficient (SHGC) were conducted using the Lawrence Berkeley National Laboratory Window 7.3 NFRC certified software. SHGC % improvement for commercial applications is based on a standard commercial glass makeup of Double Glazing 6 mm / 1/2" air / 6 mm with low E on surface #2. SHGC for residential applications is based on a default residential glass makeup of 3mm clear glass / 1/2" air / 3mm clear glass. Results for SHGC were obtained using the center of glass. All performance values are measured within tolerances of ±5%

Contact ELITE PRO for larger fabric swatches.

© 2018, ELITE PRO, A division of Elite Vertical Blinds Mfg. Co. Ltd.