

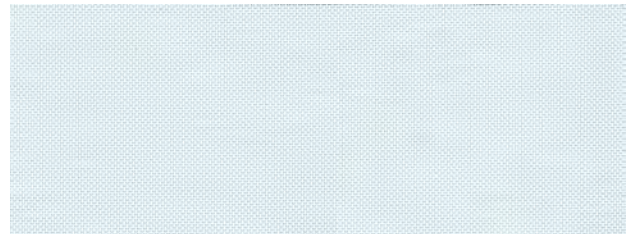
# PROWEAVE™ - S

Openness | 1% 3% 5% 10%\*

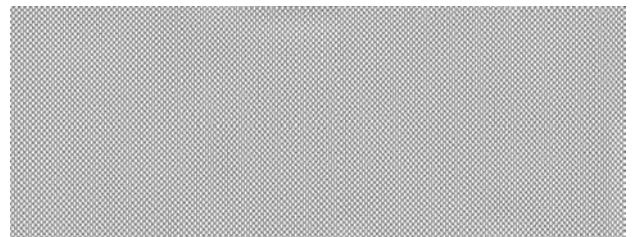


Canyon

Shown in Openness 3%



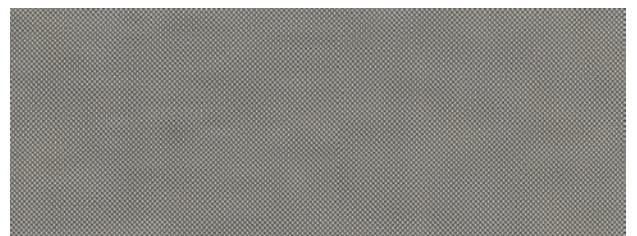
Natural



Platinum



Slate



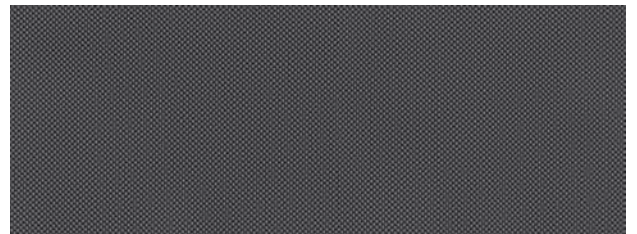
Sandlot



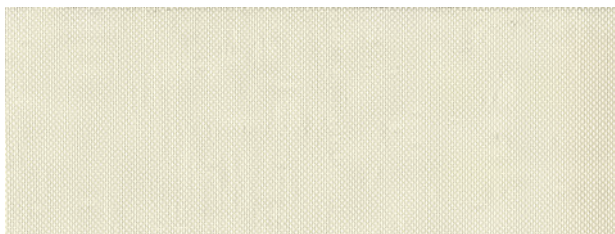
Ultra White



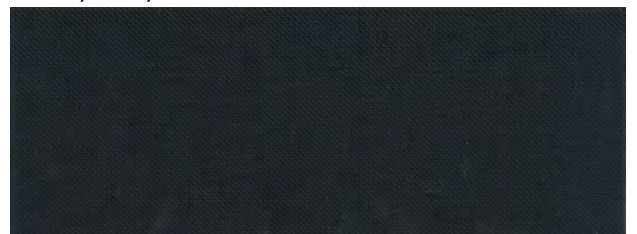
White



Husky Grey



Alabaster



Jet Black

# PROWEAVE™ - S

## Specifications



### COMPOSITION

25% Polyester, 75% Vinyl



### WEAVE STYLE

2x2 Basket Weave



### WIDTH

78" (200 cm)  
98" (250 cm)  
118" (300 cm)



### FABRIC WEIGHT

- 1% 510 g/m<sup>2</sup> (15.04 oz/sqyd)
- 3% 460 g/m<sup>2</sup> (13.57 oz/sqyd)
- 5% 415 g/m<sup>2</sup> (12.24 oz/sqyd)



### FABRIC THICKNESS

- 1% 0.66 mm (0.026") ± 5%
- 3% 0.60 mm (0.025") ± 5%
- 5% 0.54 mm (0.021") ± 5%



### UV BLOCKAGE

- 1% 99%
- 3% 97%
- 5% 95%



### GREEN STANDARDS

GreenGuard Gold  
Oeko-Tex Standard 100



### FIRE CLASSIFICATION

Canada: CAN/ULC S-109  
USA: NFPA 701 2010 TM#1



### FIRE CLASSIFICATION



## ProWeave™ - S | 1% Openness

| Colour      | Rs  | As  | Ts  | Tv  |
|-------------|-----|-----|-----|-----|
| Ultra White | 71% | 6%  | 23% | 18% |
| White       | 70% | 6%  | 24% | 19% |
| Natural     | 68% | 16% | 16% | 10% |
| Alabaster   | 64% | 17% | 19% | 14% |
| Platinum    | 50% | 9%  | 41% | 7%  |
| Canyon      | 40% | 49% | 11% | 8%  |
| Sandlot     | 37% | 53% | 10% | 8%  |
| Slate       | 31% | 59% | 7%  | 4%  |
| Husky Grey  | 9%  | 88% | 3%  | 2%  |
| Jet Black   | 4%  | 95% | 1%  | 1%  |

## ProWeave™ - S | 3% Openness

| Colour      | Rs  | As  | Ts  | Tv  |
|-------------|-----|-----|-----|-----|
| Ultra White | 68% | 5%  | 27% | 23% |
| White       | 65% | 18% | 17% | 10% |
| Natural     | 60% | 27% | 13% | 9%  |
| Alabaster   | 61% | 16% | 23% | 19% |
| Platinum    | 47% | 41% | 12% | 10% |
| Canyon      | 30% | 60% | 10% | 8%  |
| Sandlot     | 35% | 58% | 7%  | 7%  |
| Slate       | 31% | 62% | 7%  | 4%  |
| Husky Grey  | 34% | 59% | 7%  | 5%  |
| Jet Black   | 5%  | 94% | 2%  | 3%  |

## ProWeave™ - S | 5% Openness

| Colour      | Rs  | As  | Ts  | Tv  |
|-------------|-----|-----|-----|-----|
| Ultra White | 66% | 5%  | 29% | 26% |
| White       | 66% | 14% | 20% | 12% |
| Natural     | 46% | 40% | 14% | 13% |
| Alabaster   | 57% | 26% | 17% | 6%  |
| Platinum    | 60% | 15% | 25% | 22% |
| Canyon      | 28% | 64% | 8%  | 5%  |
| Sandlot     | 28% | 64% | 8%  | 5%  |
| Slate       | 33% | 57% | 10% | 5%  |
| Husky Grey  | 11% | 83% | 6%  | 5%  |
| Jet Black   | 5%  | 90% | 5%  | 5%  |

\* Samples and specifications for 10% available upon request. Minimum quantities may apply.

As (Solar Absorption) + Rs (Solar Reflection) + Ts (Solar Transmission) = 100% of solar energy. Tv = Visible Light Transmission. All performance values are measured within tolerances of ±5%. Contact ELITE PRO for larger fabric swatches.

© 2018 ELITE PRO, A division of Elite Vertical Blinds Mfg. Co. Ltd.



eliteproshading.com



1-800-387-3566

ESSENTIALS