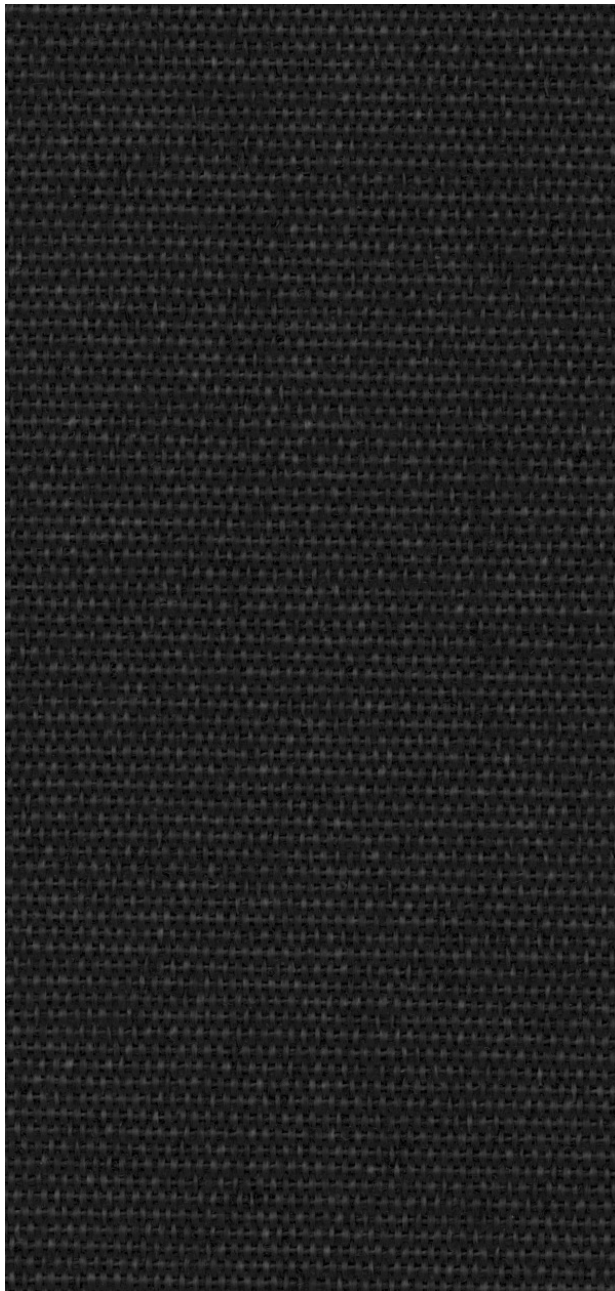


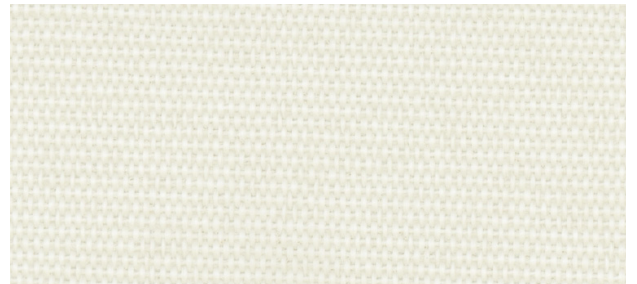


BROOKLYN

Blackout | PVC FREE



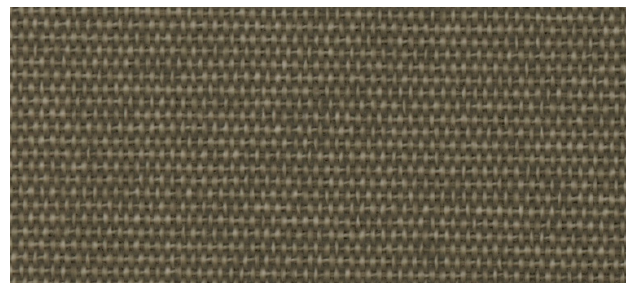
Dark Grey



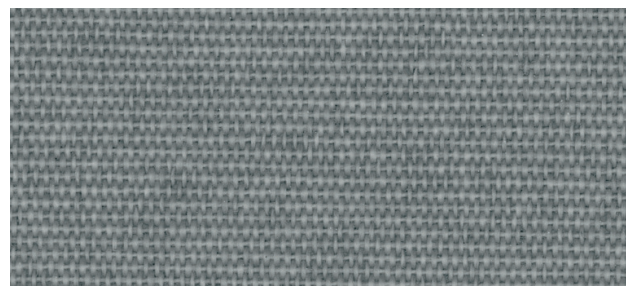
Linen



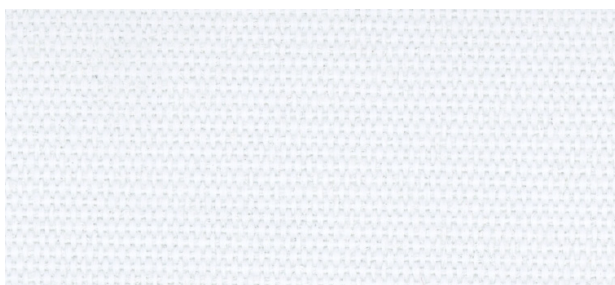
Sand



Mushroom



Light Grey



White



Black

BROOKLYN

Specifications



COMPOSITION

100% Polyester, PVC Free



WEAVE STYLE

Plain Weave with Blackout Lining



WIDTH

110" (280 cm)



FABRIC WEIGHT

380 g/m² (11.20 oz/sqyd)



FABRIC THICKNESS

0.61 mm (0.024") ± 5%



UV BLOCKAGE

100%



GREEN STANDARDS

GreenGuard Gold
PVC Free



FIRE CLASSIFICATION

NFPA 701
CAN/ULC-S109
Small & Large Scale Flame Test



CERTIFICATIONS



BROOKLYN | Blackout

Colour	Rs	As	Ts	Tv	SHGC
White	64%	36%	0%	0%	0.21
Linen	64%	36%	0%	0%	0.21
Sand	64%	36%	0%	0%	0.21
Mushroom	64%	36%	0%	0%	0.21
Light Grey	64%	36%	0%	0%	0.21
Dark Grey	64%	36%	0%	0%	0.21
Black	64%	36%	0%	0%	0.21

As (Solar absorption) + Rs (Solar Reflection) + Ts (Solar Transmission) = 100% of solar energy. Tv = Visible Light Transmission. SHGC = Solar Heat Gain Coefficient is measured using 1/4" heat absorbing glass + fabric All performance values are measured within tolerances of ±5%.

Contact ELITE PRO for larger fabric swatches.

© 2018, ELITE PRO, A division of Elite Vertical Blinds Mfg. Co. Ltd.



eliteproshading.com



1-800-387-3566

BLACKOUT